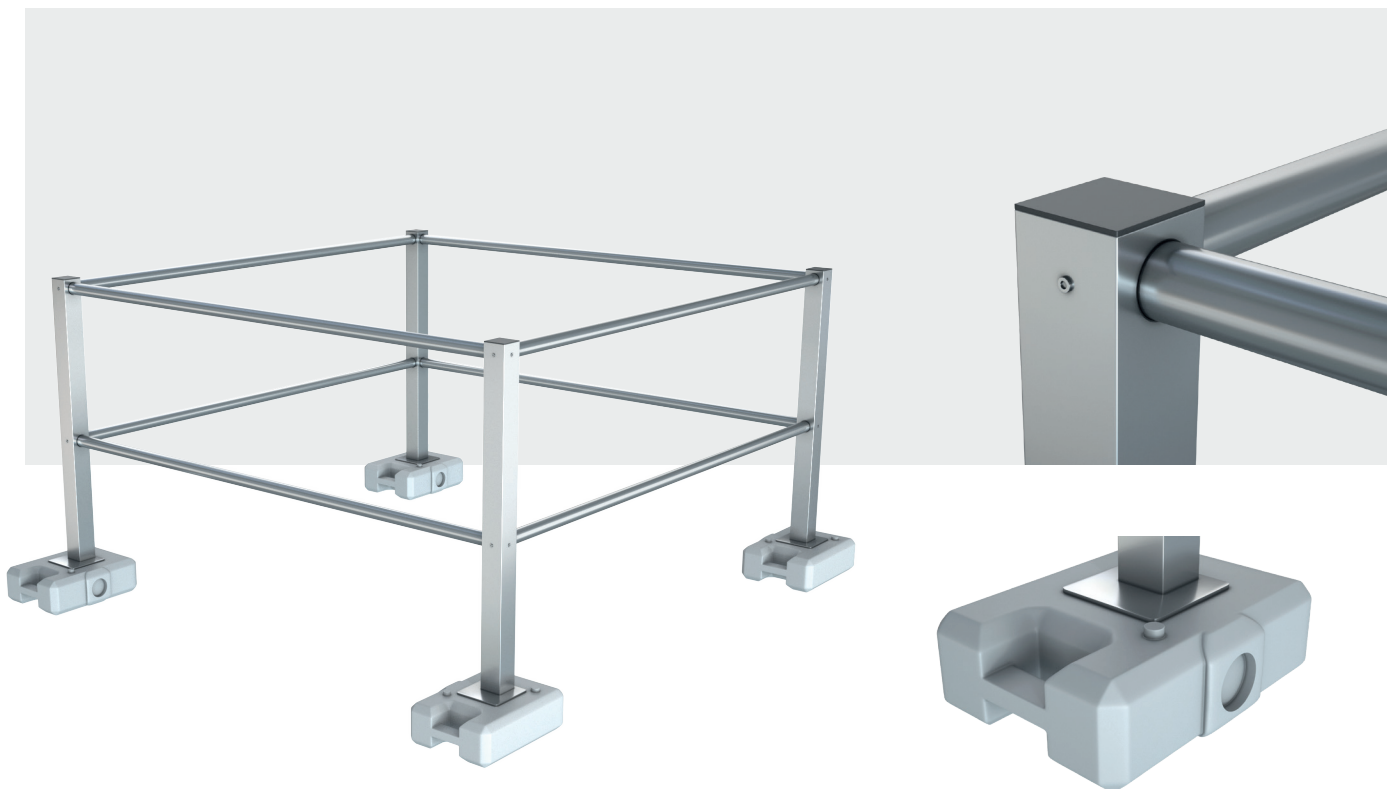


ACCEN SKYLIGHT



Effective protection of skylights with ACCEN SKYLIGHT system railings guarantees fall protection. The protection is made in a modular way as a collective protection system, allowing for safe work on the roof, without the risk of falling through glass holes. They can be adapted to the shape and circumference of any skylight and set on substrates made of concrete, bitumen, membrane.

The ACCEN SKYLIGHT protection consists of a handrail at a height of 1,1 m and a crossbar at mid-height and an optional curb beam. The railing system works on the principle of a counterweight, thanks to the weights mounted on the arms moved away from the railing axis, the system is stable. They are installed without interfering with the roofing, thus ensuring its tightness. Balustrades and brackets are made of aluminum alloy, and the inertial mass is made of concrete coated with plastic. All elements that come into contact with the roof surface are protected against damage to the insulation.

Technical Specifications

| | |
|-----------|------------------------------|
| Material: | ALUMINIUM, PCV |
| Size: | 1100 mm |
| Norm: | EN ISO 14122-3, EN 13374 – A |
| Warranty: | 5 year |