

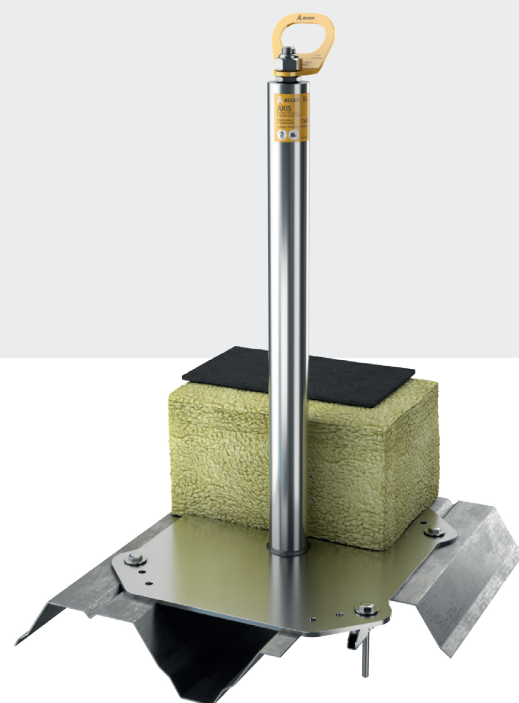
The AXIS TR safety post is intended for use as an anchoring point to prevent falling from a height for three people at the same time.

It was developed for the purpose of securing people working at heights. It is basically used as end / corner supports in horizontal ACCENLINE rope systems in accordance with EN 795 C. The AXIS TR safety post is secured with special tilting anchors to structural trapezoidal sheets. The minimum sheet thickness is 0,70 mm.

Used for sheets in the TR50-TR 190 range. AXIS TR is made entirely of stainless steel (material 1.4301). The total maximum height of the post is up to 600 mm. Standard post base dimensions: 400 x 400 mm, diameter 50 mm.

On the post, a fastening point with a swivel can be mounted allowing it to rotate in all directions 360°.

This prevents the formation of loops when the safety line is fastened. AXIS TR pedestal meets the requirements of the standard for anchoring devices EN795 A/C, and CEN/TS 16415.



## Specification

Material	INOX
Weight	11 kg
Size	600 mm, diameter 50 mm
Users	3
Standard	EN 795 A/C, CEN/TS 16415
Warranty	12 months

## Mounting substrates

trapezoidal metal sheet	0,7 TR50-TR160
-------------------------	----------------