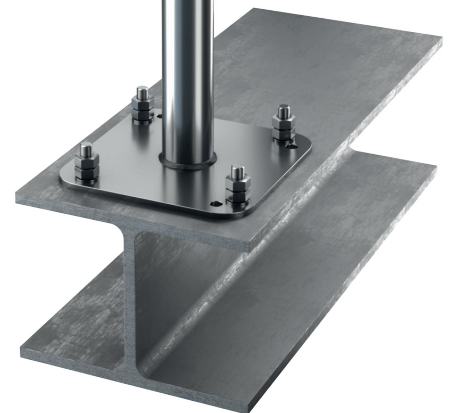




**AXIS ST safety brace is made entirely of stainless steel (material 1.4301). Total maximum post height is up to 1000 mm. Standard post base dimensions: 220 x 220 mm, diameter 50 mm.**

On the post, a fastening point with a swivel can be mounted allowing it to rotate in all directions 360°. This prevents the formation of loops when the safety line is fastened. It can be installed into steel structures with a minimum material thickness of 5 mm using class 8,8 screws.

AXIS ST post meets the requirements of the EN795, class A/C and CEN/TS 16415 standard for anchoring equipment.



## Specification

Material	INOX
Weight	4 kg
Size	300-1000 mm
Users	3
Standard	EN 795 A/C, CEN/TS 16415
Warranty	12 months

## Mounting substrates

Steel structures with a minimum material thickness of 5 mm